

Lidl & Deer Park School

Newsletter June 2019

Dear Residents,

Since our last newsletter works have been progressing very well. Aside from a few days of high wind the weather has been favourable since Christmas allowing groundworks to proceed unencumbered. The basement excavation, foundations, drainage, elevator pits, and other services within that portion of the site have been completed. Kier has now installed all steel reinforcement across the basement and commenced pouring the basement slab concrete, which can be seen in the photos. This will eventually form the car park for the new Lidl store.

The next key activities on site will be to install the rainwater attenuation tank and to complete the foundations at ground level (under the school ground floor/entrance footprint) and then prepare to lay the ground floor slab for the store and the school.

You will have noticed that along the front of the site scaffolding has been installed and boxed in. This will create a safe and segregated walkway for public use while site deliveries are offloaded in the newly created layby where the pavement normally runs. Towards the end of the project the footpath, kerb, and street furniture will be reinstated/upgraded.



From the Deer Park team: Given the exciting progress update from Kier, the School is now looking forward to working with colleagues from the Department for Education, Lidl & Kier to finalise the finishes to what we know will be a simply fabulous new School building. We are all working together towards Kier's anticipated completion of this exciting project in late Spring 2020. As work on site is now progressing apace, and the building is showing obvious signs of emerging from the ground, we are hopeful that we will be able to provide more regular details of further progress during each school term."

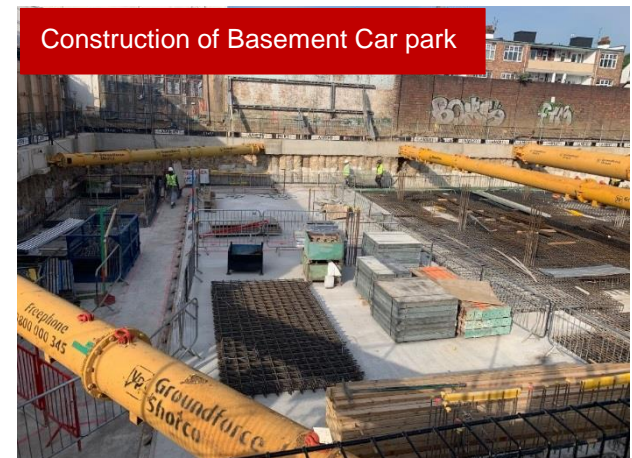
On the 18th March we took part in the Open Doors event. This gave members of the public the opportunity to see behind the hoarding. On the day we had 10 attendees who were given a site induction, overview of the project, walk around the site and given a brief overview of the various jobs & routes available. All were very pleased with the visit & gave good feedback about the site.



Construction of Basement Car park



Construction of Basement Car park



Kier's Shaping your world campaign

For more information regarding this project please go to :

<http://www.richmondroad.lidl.co.uk/>

Kier Construction
Thames Valley