

# Lidl & Deer Park School

## Newsletter October 2018



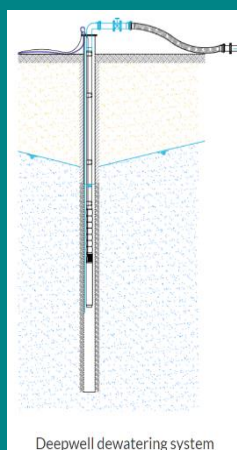
### Dear Residents

Works are progressing well to the substructure for the Lidl & Deer Park school building with the completion of piling at the beginning of October.

The next key activity on the project is to construct the capping beam for the basement to allow the installation of Temporary propping. The temporary propping which can be seen in the 3D image, will provide the necessary structural support during the basement bulk excavation works.

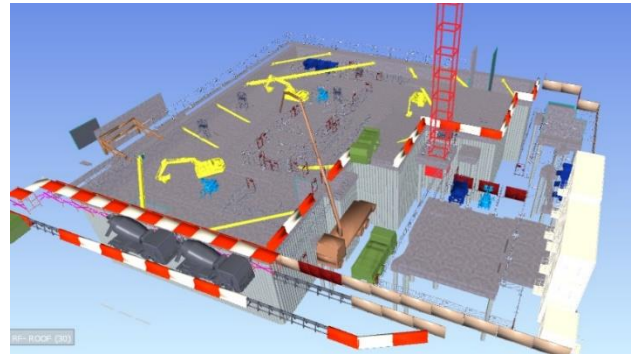
Kier will be erecting the Tower Crane on site over Thursday 18<sup>th</sup> & Friday 19<sup>th</sup> October. The Tower crane will be erected using a 250ton mobile crane which will lift the tower crane sections into place. The Tower crane will be used throughout the project to assist in logistic management during the construction phase. Please feel free over the course of the 2 days to utilise the peep holes within the hoarding to see the erection process in action.

Kier will also commence the dewatering of the basement. Dewatering systems are routinely used in the construction industry to provide temporary reductions in ground water levels for structures which extend to below groundwater level. Dewatering well system consists of an array of bored wells, each fitted with a multi-stage electric submersible borehole pump. As water is pumped from each well, the groundwater is lowered creating a cone of depression or drawdown around itself.



### Site Contact Details:

Project Manager- Murtagh Varley  
07771945182



Lidl & Deer Park 3D BIM Model



Example of Kier Tower crane in action

As you will be undoubtable aware, Thames Water are currently carrying out emergency works along Richmond Road due to a blocked sewer main.

Investigations are ongoing to identify the route course of the blockage. Kier will continue to work with Thames Water during the works and will provide assistance where possible to help reduce the disruption to traffic flow along Richmond Road.

We understand from Thames Water if all things go as planned the works should be completed by early next week.